




Zeta Alarm Systems

Emergency Telephone System

The Outstations

There are three types of outstation available these are:

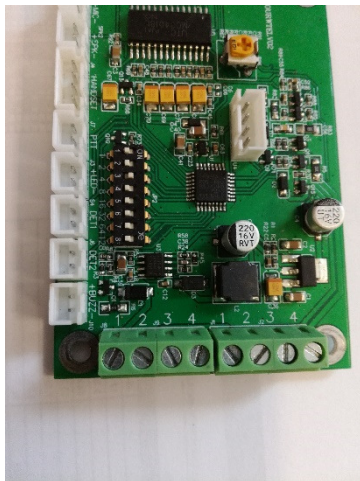
	
HF-OS Hands Free Disabled Refuge Unit	JS-OS Jack Socket Unit
	
TS-OS/R Telephone Station	JS-THS Telephone Handset for Jack Socket Unit

The Addressable Bus Connections

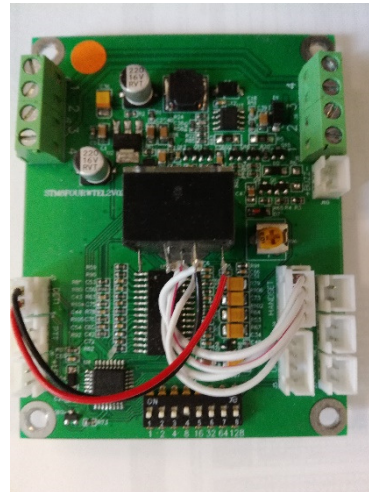
The Addressable Bus is a four wire system each wire is numbered 1 to 4 for easy identification. Use of a 4 core cable is recommended.

The Panel Bus connections are 1 to 1, 2 to 2, 3 to 3 and 4 to 4.
Outstations have BUS IN and BUS OUT terminals for easy installation.

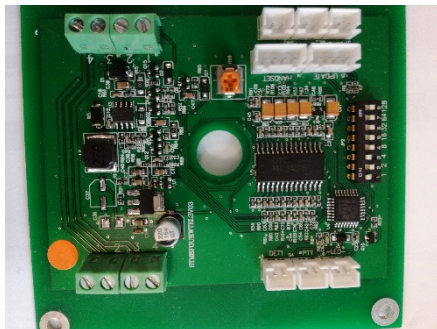
Telephone Outstation Terminals.



Telephone Jack Socket Terminals.



The Hands Free Outstation Terminals.



BUS Terminals 1-4 IN & OUT

8 Way DIP Switch to set device address.

Terminal 1 is 24Volts
Terminal 2 is DATA
Terminal 3 is 0V (GND)
Terminal 4 is VOICE

Telephone Handset – TS-OP/WP

Remove cover to set address switches, a cable connecting the BUS terminals has been included, confirm the cable connections are correct then replace cover carefully not trapping wires under the plate.

Black wire is Terminal 1.
Red wire is Terminal 2.
Blue wire is Terminal 3.
Yellow wire is Terminal 4.

Ensure all seals are not damaged before covers are fitted to maintain IP rating.

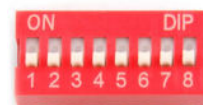


Address Setting

Address Setting

The panel uses the standard binary style addressing using an 8 way DIP switch settings. Valid addresses are 000 to 119.

Use switches 1 – 7 to set address, switch 8 is not used.



For example, a device with switches 1,3 and 6 set to ON (binary 1) and the rest OFF (binary 0) will be address $(1 + 4 + 32) = 37$.